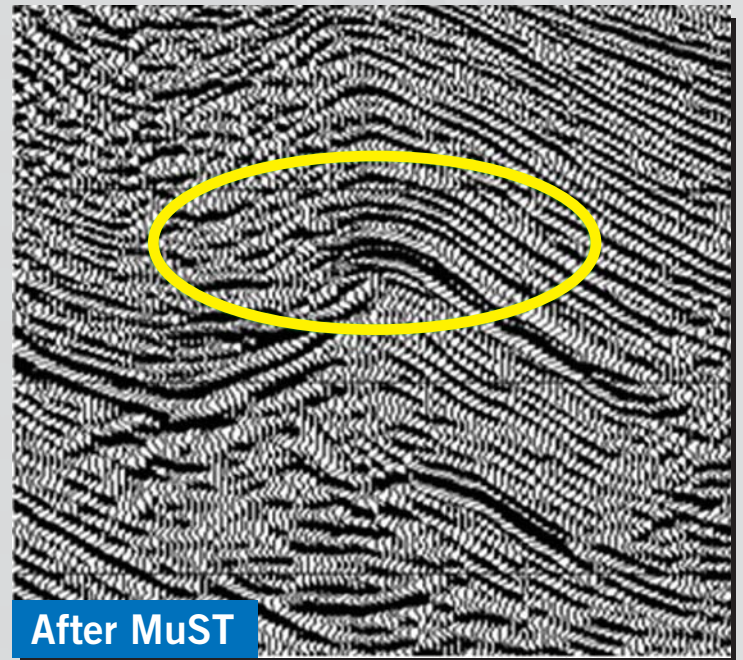
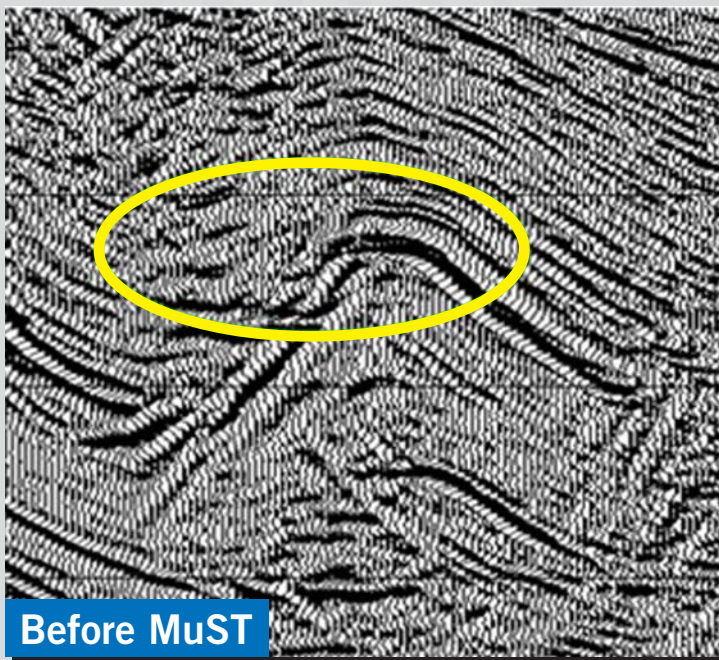


MuST: Multi-Scale Tomography

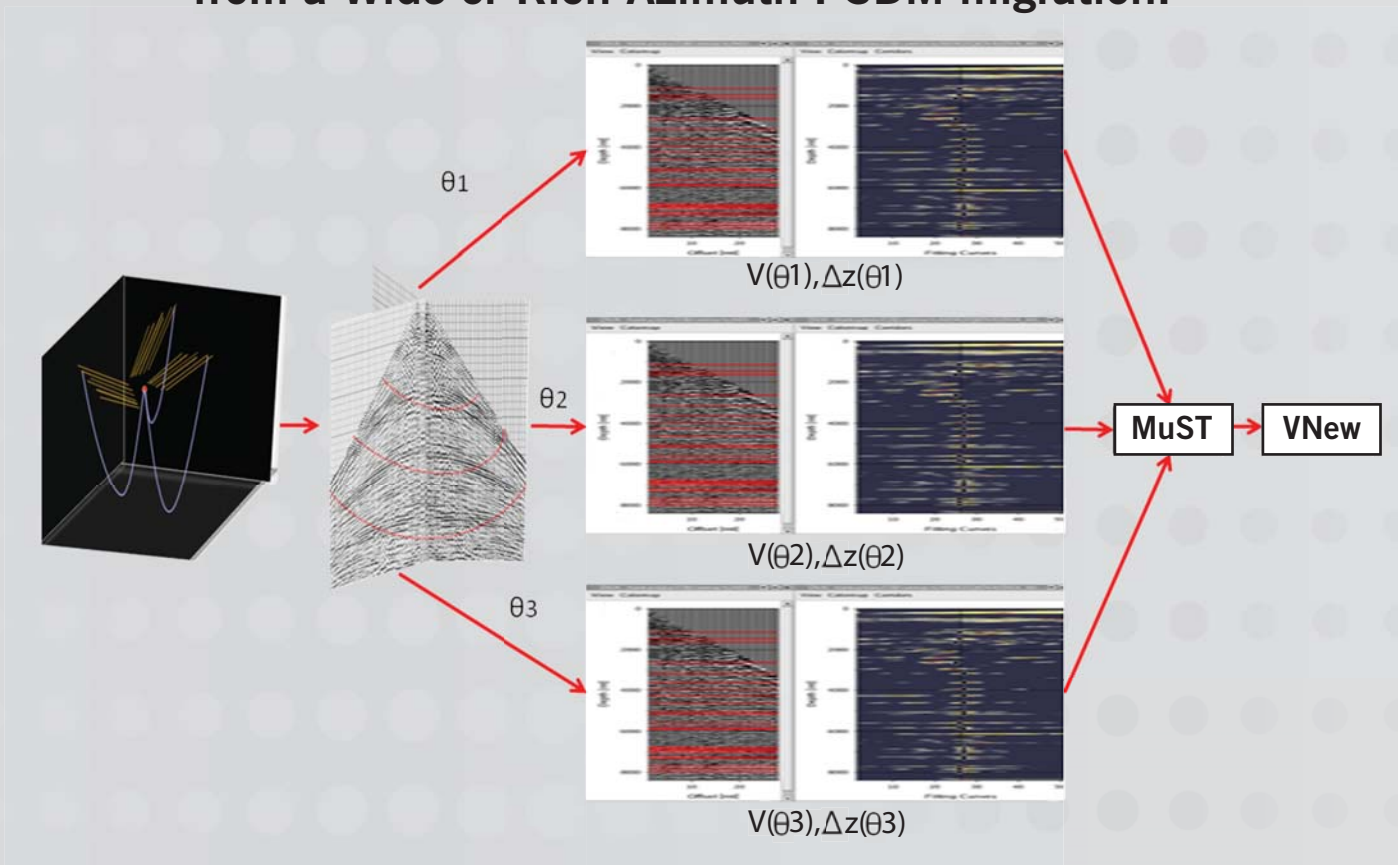
Resolve all the scales in your prospect!

Geotrace has taken a quantum leap in imaging with its unique, proprietary Multi-Scale Simultaneous Tomographic Inversion.

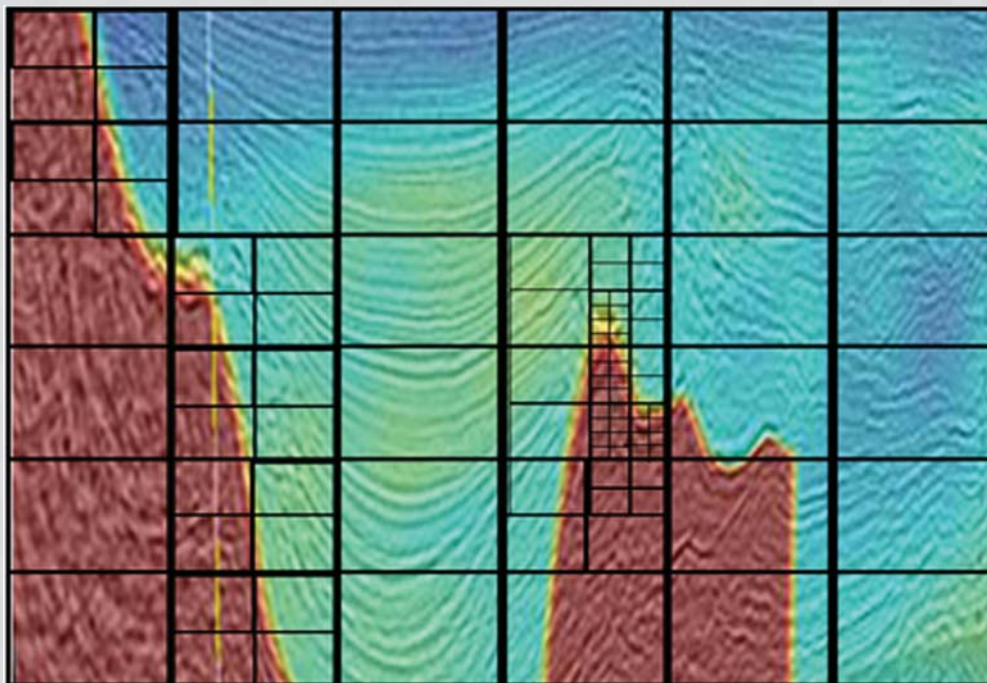


- Simultaneous Multi-Scale Grid velocity representation
- Velocity updating consistent with Full and Wide Azimuth Acquisitions
- Low and High Frequency variations in Velocity Model
- Geological Constraints
- Autopicking of Horizons and Gathers
- Velocity Corridors for more stable picks
- Non-hyperbolic capabilities
- Use of Acquisition Geometry in inversion

MuST can update velocity models using data from a Wide or Rich Azimuth PSDM migration.



After an azimuthally preserving PSDM, Offset Vector Gatherers are picked and fed to MuST for an azimuthally dependent velocity update.



The use of multiple regular grids with different cell sizes allows for a high resolution velocity model.

©2010 Geotrace All Rights Reserved

