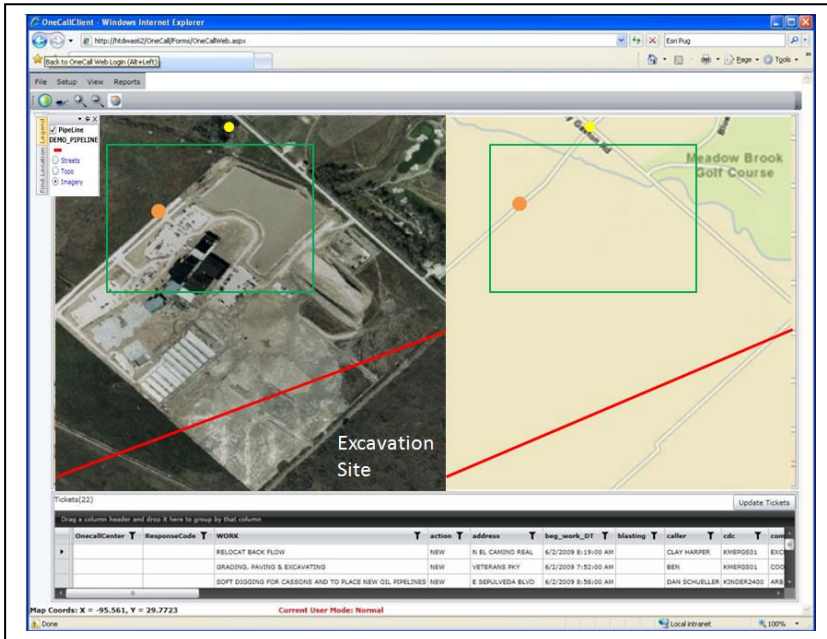


Providing Immediate Access and Use of All the Information – Excavation Notices, Maps, Imagery, Historical Data, other



PetrisWINDS OneCall™ brings all Pipeline Safety personnel, Excavation Notice data and maps, and Imagery & Graphics together through a web-based work space and data environment.

The **PetrisWINDS** OneCall Web User Interface accesses the data thru the Internet, which means that local software or data is required to run the application. The graphical interface maps each ticket to a detailed road or imagery base system and locates the excavation. The address/intersection matching and the appropriate state footprint-referencing system mapped with the Pipeline Centerline allows the user to quickly determine if the excavation conflicts with underground assets.

The PetrisWINDS OneCall Screening Support System Server is designed to provide better control over One Call operations by automating

the process of receiving and responding to excavation tickets. The Petris OneCall system electronically receives excavation tickets at a central location, presents them to the appropriate field personnel and provides automatic "Positive Responses" to OneCall Centers & excavators when the proposed construction will not interfere with buried facilities.

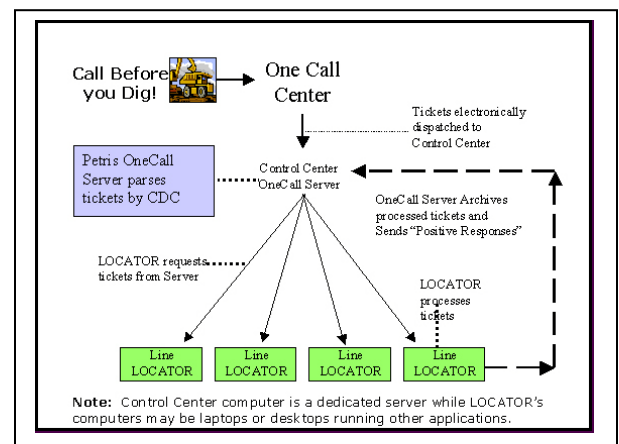
The Challenge

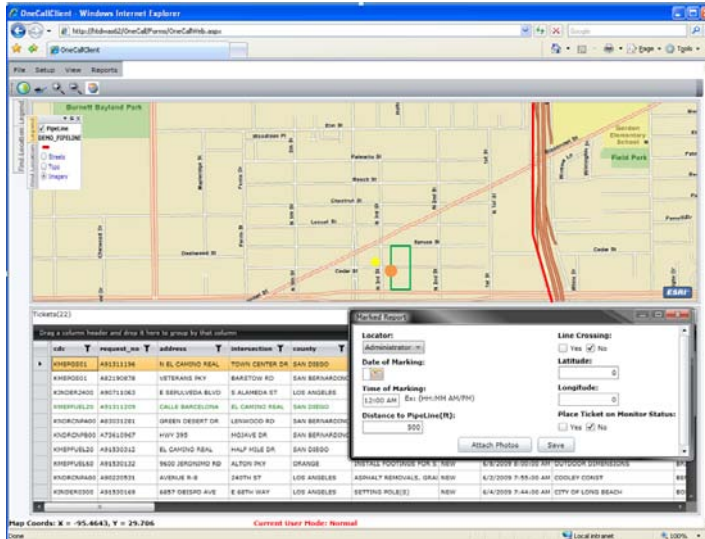
Pipeline safety professionals receive different excavation notices from various states, provinces & parishes but require common methodology for analyzing and responding to different notices. The PetrisWINDS OneCall Web Based User solution provides a common interface and analysis solution across all geographies. PetrisWINDS OneCall – access and evaluate the data, anywhere, anytime.

Petris' Solution

Using PetrisWINDS OneCall, 'Call-Before-You-Dig' notices are received from all the independent OneCall Centers and stored in a common Database.

- ▶ Ensures a common data structure regardless of the data source
- ▶ Users view, analyze and process a single type of data
- ▶ Creates a common decision process regardless of geography
- ▶ Better collaboration and communication through Microsoft Databases and ESRI GIS ArcServer technologies
- ▶ Increased user productivity





Highlights of the Solution

- ▶ Web Based User Interface
- ▶ ESRI GIS ArcServer architecture
- ▶ Single Common Database
- ▶ Automated Positive Response
- ▶ Historical Audit Record
- ▶ Quick to set up
- ▶ Intuitive user interface simplifies training
- ▶ Backed by over 10 years user experiences

OneCall Web and OneCall Server Features

- ▶ Web based user interface –
 - NO Local Software to Install, NO Local User Maintenance
- ▶ ESRI GIS ArcServer architecture for mapping and graphics
 - Simplifies access to your services, data, and imagery
 - Connects more people with the information they need to make better decisions.
- ▶ Maps the location of a ticket automatically when the ticket is touched
 - Displays the appropriate OneCall Center footprint or state grid system
- ▶ Electronically receives, screens, parses, and redirects tickets to appropriate users
- ▶ Displays each excavation notice as a single ticket from the database
- ▶ Displays roads, company pipelines, jurisdictional boundaries, and any other GIS data
- ▶ Automatically handles Positive Responses to OneCall Centers and Excavators
- ▶ Supports Ticket and Response communication to all States, Provinces and Parishes
- ▶ Generates a detailed historical Audit Record for each ticket – Regulatory Audit Trail
- ▶ Highly configurable to meet the needs of each individual user

About Petris

Founded in 1994, Petris has grown into a leading supplier of data management solutions and geosciences applications providing practical, real-world solutions for the Global Oil and Gas Industry. With over 500 customers around the world, Petris leverages its unique service-oriented Data Management solutions and applications to design and deploy innovative technology that integrates data from diverse data stores including seismic, borehole, production, drilling and pipeline to enable better decision making and application transparency. Petris is leading the way into a new era in integration, collaboration, data quality and geoscience. www.petris.com

© 2010 Petris Technology, Inc. All rights reserved.

PetrisWINDS is a registered trademark of Petris Technology Inc. in the United States and other countries.

Other parties' trademark and service marks are the property of their respective owners, and should be treated as such.

Information in this document is subject to change without notice, and does not represent a commitment on the part of

Petris Technology Inc.

www.petris.com